

TREATING DARK ANTERIORS AND RESTORING SELF-ESTEEM WITH VITA VM[®]9 PORCELAIN



Amos Harting, CDT
Harting Dental Arts Lab, Inc.
St. Louis, Missouri

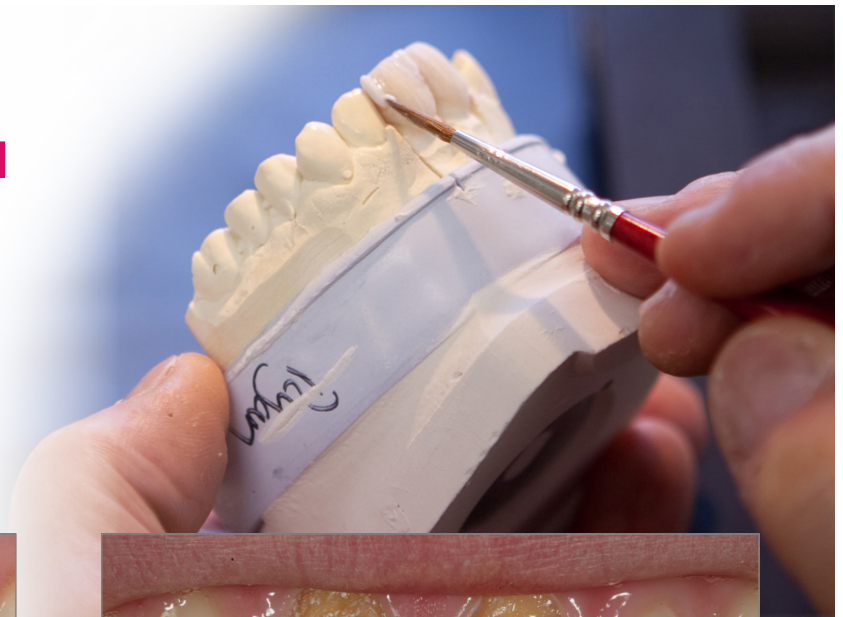


Fig. 1 Root canal treatment left the anteriors extremely dark



Fig. 2 Preps ready for shade selection



Fig. 3 The dentine is confirmed as VITA 3D-Master[®] shade 1M1

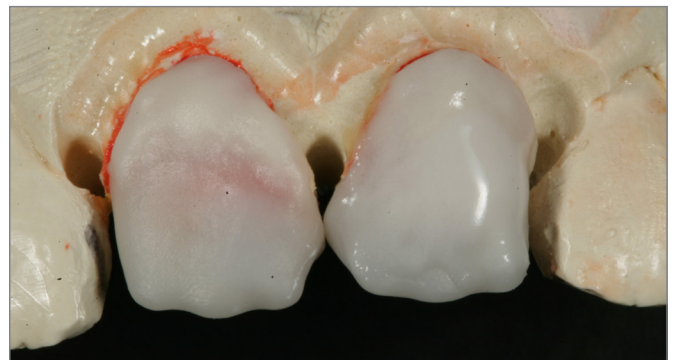


Fig. 4 Zirconia copings with VITA VM9 Effect Liner

INITIAL SITUATION

A 26-year-old male patient presented for a restoration consultation. The patient was in good health, but had extremely dark teeth due to root canal treatment (**Fig. 1 and 2**). As a result, he was embarrassed to smile, which was affecting his confidence and self-esteem. When he talked, he also tried to avoid showing his front teeth.

MATERIAL SELECTION

The material I chose for this restoration was VITA VM9 porcelain material (VITA North America). VITA VM9 is always my go-to material for this type of case. With VITA VM9 porcelains, I am able to use a zirconia substructure to mask out or counter the dark, underlying dentition.



VITA



Fig. 5 VM 9 Base Dentine with a mamelon structure

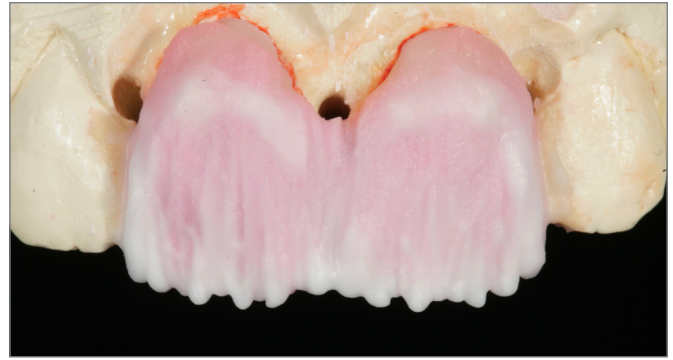


Fig. 6 VM9 Effect Chroma/Effect Enamels create highlights



Fig. 7 Final restoration with glazing and polishing

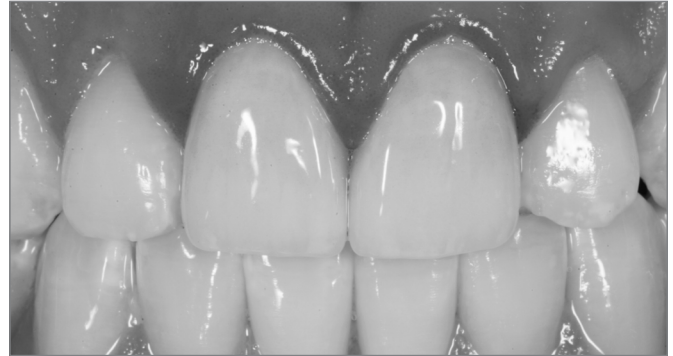


Fig. 8 Black and white imagery confirms value match

DESIGN

I use a trademarked restoration technique called "EverLast Esthetic®." The process consists of 1200 MPA zirconia with lingual working surfaces that are highly-polished. The facial surfaces are developed using multi-layered VITA VM9 porcelain. With VM9, I have the ability to raise and lower the value by mixing, adding and using interpolated shades to hone in on a shade match more precisely than with any other porcelain on the market.

Utilizing the VITA Easyshade system also gives me the opportunity to evaluate each build to see where my value is so I can adjust my next build more accurately. In this case I used a variety of effect powders. The dentine shade is 1M1 with a darker VITA VM9 Effect Liner at the gingival crest. **(Figs. 3-6)**. The restoration was then glazed and polished **(Fig. 7)**. The final restoration shows a value close to the patient's natural dentition **(Fig. 8)**.

RESULT

The before and after photos give an indication of the power and creativity that VITA VM9 offers a talented dental technician, which can then be made available to dentists and patients. With the VITA Linearguide 3D-Master, the porcelain options and the VITA Easyshade, I have a complete system that allows me to create more natural, esthetic restorations.

800-828-3839 USA • 800-263-4778 CAN
vitanorthamerica.com

VITA